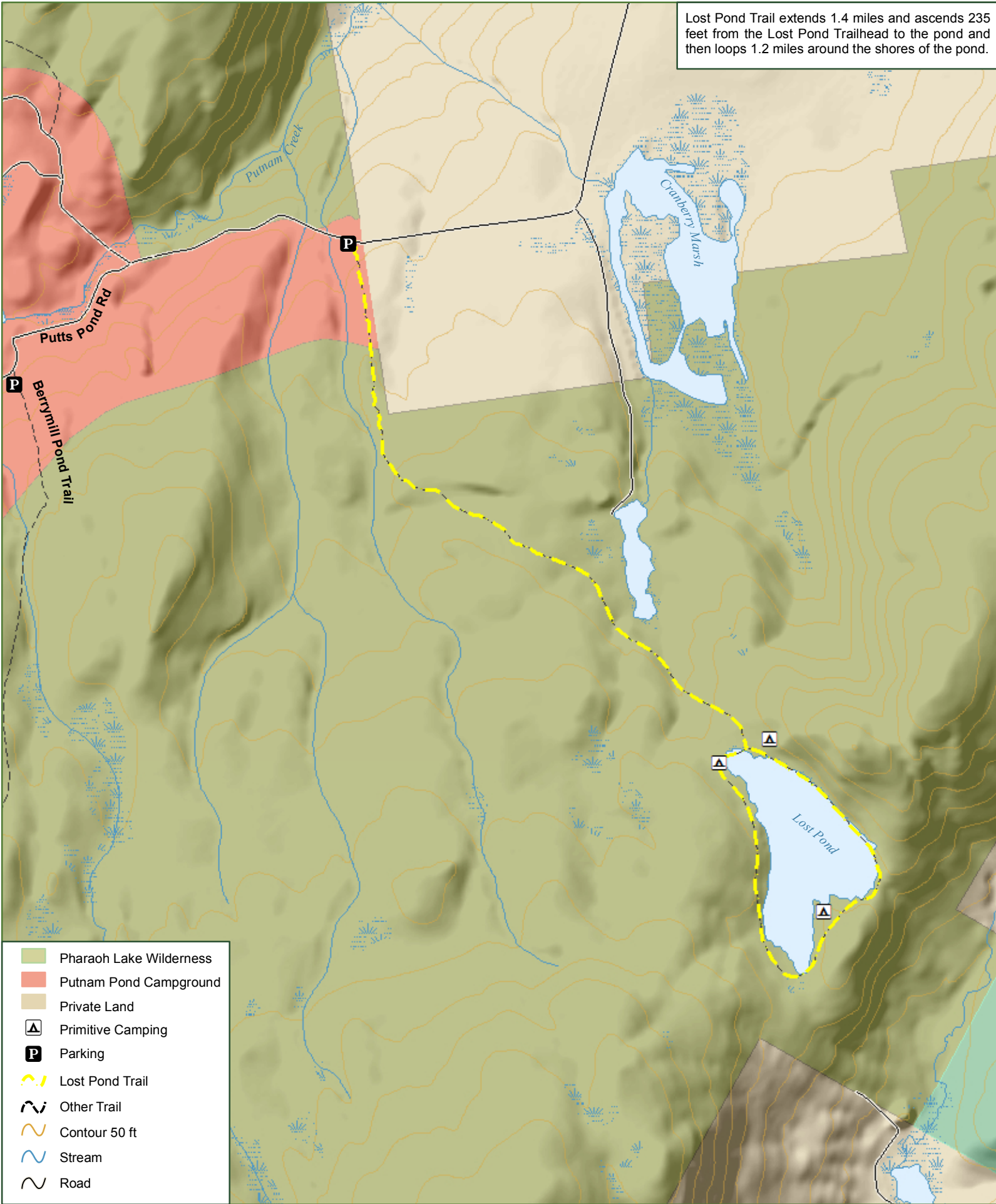


# Pharaoh Lake Wilderness - Lost Pond Trail

Lost Pond Trail extends 1.4 miles and ascends 235 feet from the Lost Pond Trailhead to the pond and then loops 1.2 miles around the shores of the pond.



- Pharaoh Lake Wilderness
- Putnam Pond Campground
- Private Land
- ▲ Primitive Camping
- P Parking
- Lost Pond Trail
- Other Trail
- Contour 50 ft
- Stream
- Road



Department of Environmental Conservation

<https://www.dec.ny.gov/outdoor/24492.html>  
 \*\*\*Practice Leave No Trace Principles\*\*\*  
 \*\*\*Emergency contact 518-891-0235\*\*\*

