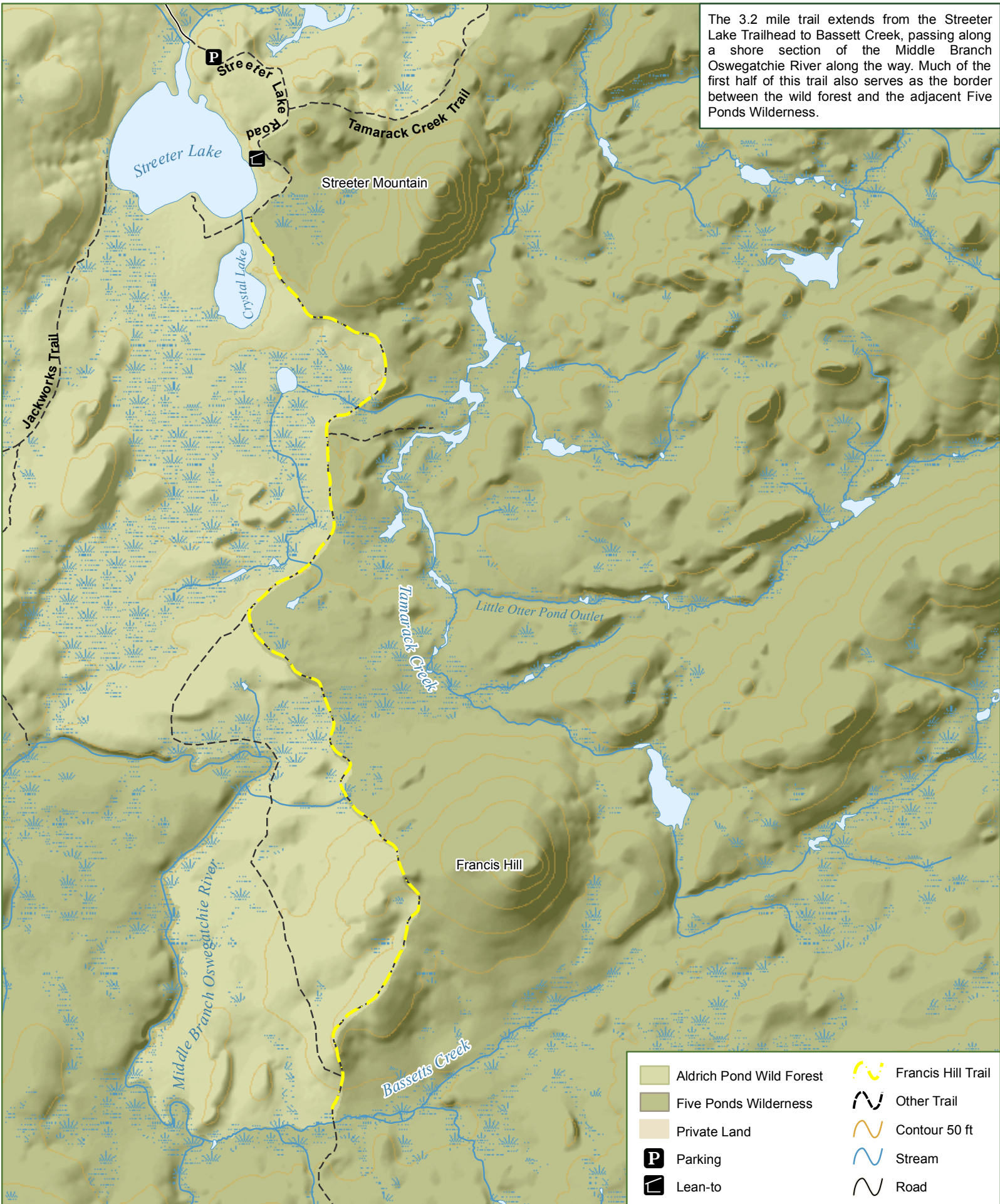


# Aldrich Pond Wild Forest - Francis Hill Trail

The 3.2 mile trail extends from the Streeter Lake Trailhead to Bassett Creek, passing along a shore section of the Middle Branch Oswegatchie River along the way. Much of the first half of this trail also serves as the border between the wild forest and the adjacent Five Ponds Wilderness.



Department of Environmental Conservation

\*\*\*Please respect private property. Stay on designated trails\*\*\*  
 \*\*\*Practice Leave No Trace Principles\*\*\*  
 \*\*\*Emergency contact 518-891-0235\*\*\*

